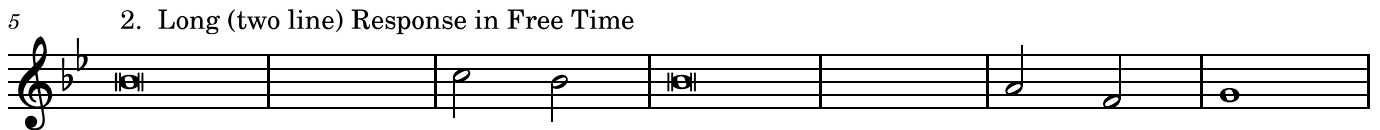


Simple Chant for All Responsorial Psalms

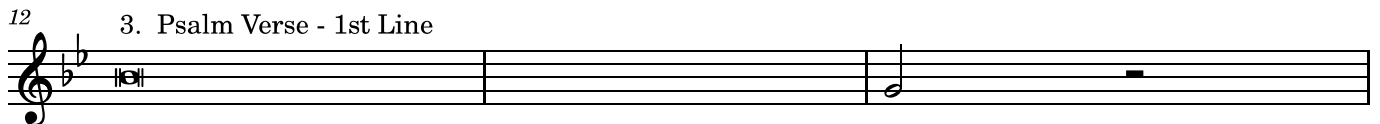
1. Short (one line) Response in Free Time



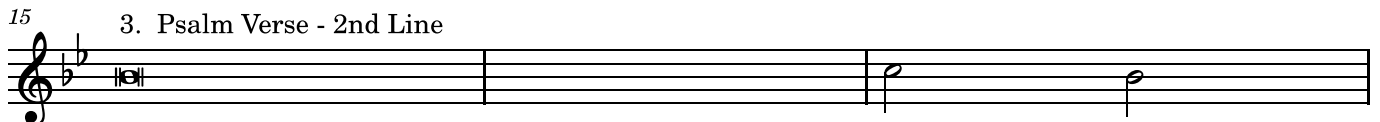
2. Long (two line) Response in Free Time



3. Psalm Verse - 1st Line



3. Psalm Verse - 2nd Line



3. Psalm Verse - 3rd Line



3. Psalm Verse - 4th Line



For Psalm verses with 2 lines only use 1st or 2nd and final line chants.

For Psalm verses with 3 lines only use 1st and 2nd and final line chants.

For Psalm verses with more than 4 lines, re-group them into 3 or 4 line verses and chant as above.